

12. PIONEER RESERVE

Commemorates the site of the tent home and stockyards of Dr W.J. Browne, the district's first settler in December 1839.

13. LYNDOCH HOTEL

Originally the Farmers' Rest Hotel built in 1869, and noted for having the longest front bar in the colony. Became the Travellers' Rest Hotel and has been largely rebuilt after a fire in 1914. Only hotel still trading today.

14. VICTORIA STORE

Originally a finishing school for young ladies, it was later established as a general store in 1887. Over the years it has had a number of owners and is currently run as a thrift shop.

15. NEW LORD LYNDOCH HOTEL

It was built in 1855 by Stephen Gower and was said to have 16 rooms, dining space for 100 and a balcony. The cost was estimated at £1000.

16. SCHACHE'S SADDLERY

Commenced in 1914 it was the town's only saddlery business at the time. He was noted for his 'cure all' ointment.

17. OLD MILL HOUSE

Built in 1855 as the manager's residence for the adjacent flour mill which was destroyed by fire on 30.3.1959.

18. BIBLE CHRISTIAN CHAPEL

Now a private house it was built in 1860. It served as the Lyndoch Institute from 1878 until 1912.

19. UNION CHAPEL AND SCHOOL

Built on the east side of Foster Street in 1855 it was run by the Congregationalists until 1875. It is now a private residence.

20. GERMAN CHAPEL AND SCHOOL

Now a private residence on the west side of Foster Street it was built about 1855. It later became Reu's general store.

21. PUBLIC CEMETERY

Dating back to 1855 the cemetery began as a private one run by trustees of the Congregational denomination. It was taken over by the Barossa West Council in 1888.

22. OLD COLONIST INN

Originally an inn built in 1855, it became the home and surgery of Dr Richter, who continued his practice there for 46 years.

23. OLD SCHOOL HOUSE

Originally the residence of teacher, August Kayser, it was transferred to the Education Department in 1880. It is now a residence.

24. LYNDOCH PRIMARY SCHOOL

Built in 1879 by A.E. Kauffmann at a cost of £825.

25. ROW OF COTTAGES

Found on either side of the Barossa Inn, they are typical of early buildings in the town.

26. BAROSSA INN

Built as an hotel in 1856 it continued until 1913 when it became a store. From 1922 it was a bakery and is now a private residence.

27. EVAPORATOR SITE

In 1923 the Evaporator was established as a dehydration plant to process fruit grown locally. It has since been demolished.

28. ST JOHN'S CHURCH

When the Lutheran congregation split in 1879 a new church was built in the town. The present church was built in 1927 when the original one was demolished.

29. BAPTIST CHURCH & MANSE

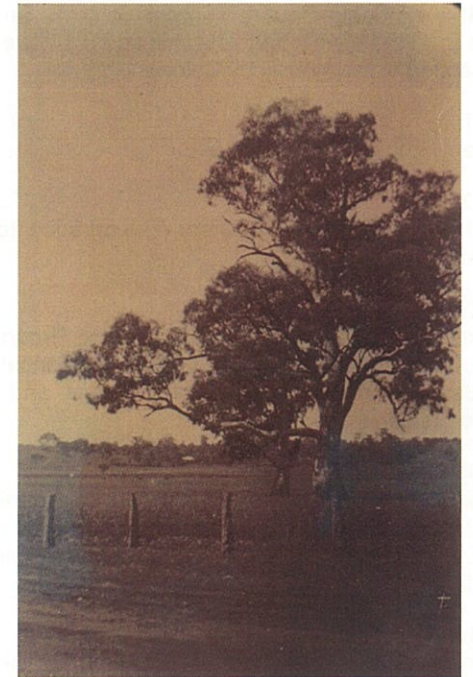
The church was built in 1862 at a cost of £310. The manse was built in 1866.

30. RECREATION PARK

This began in 1894 when the land was leased from the SA Company. It was purchased in 1913 and is held in trust by the Council.

© Lyndoch Historical Society 2008

LYNDOCH TOWN WALK GUIDE



1. VILLAGE GREEN

Part of the Main Street Programme the land was purchased in 1995 by the Barossa District Council.

2. OLD LYNDOCH GARAGE

The site was originally that of the Lyndoch Garage operating until 1983 when it was converted into a bakery and restaurant.

3. LYNDOCH DELICATESSAN

Tea rooms from 1928 established by the Sloane family, it has continued over time with a number of proprietors.

4. OLD COUNCIL OFFICE

It started as a saddlery business in 1861. From 1928 to 1960 the room at the end was used as the Barossa District Council's office.

5. POST & TELEGRAPH OFFICE

Now part of a private residence it was built in 1877 by the Juncken family. It remained in use until 1912.

6. LORD LYNDOCH INN

Now used as space for specialty shops it dates back to the 1840s. Fiebig Square in front contains an old mill stone from the town's first flour mill and a plaque marking the naming of the locality by Colonel Light.

7. POST OFFICE

Present Post Office built in 1912.

8. LYNDOCH INSTITUTE

Built in 1912 as a hall and library. The art deco front was added in the 1940s.

9. WAR MEMORIAL GARDENS

Commenced as part of the Main Street Programme in 1997, it was completed by the Lyndoch Historical Society. Plaques and monuments recognise wars and conflicts where residents served.

10. OLD GENERAL STORE

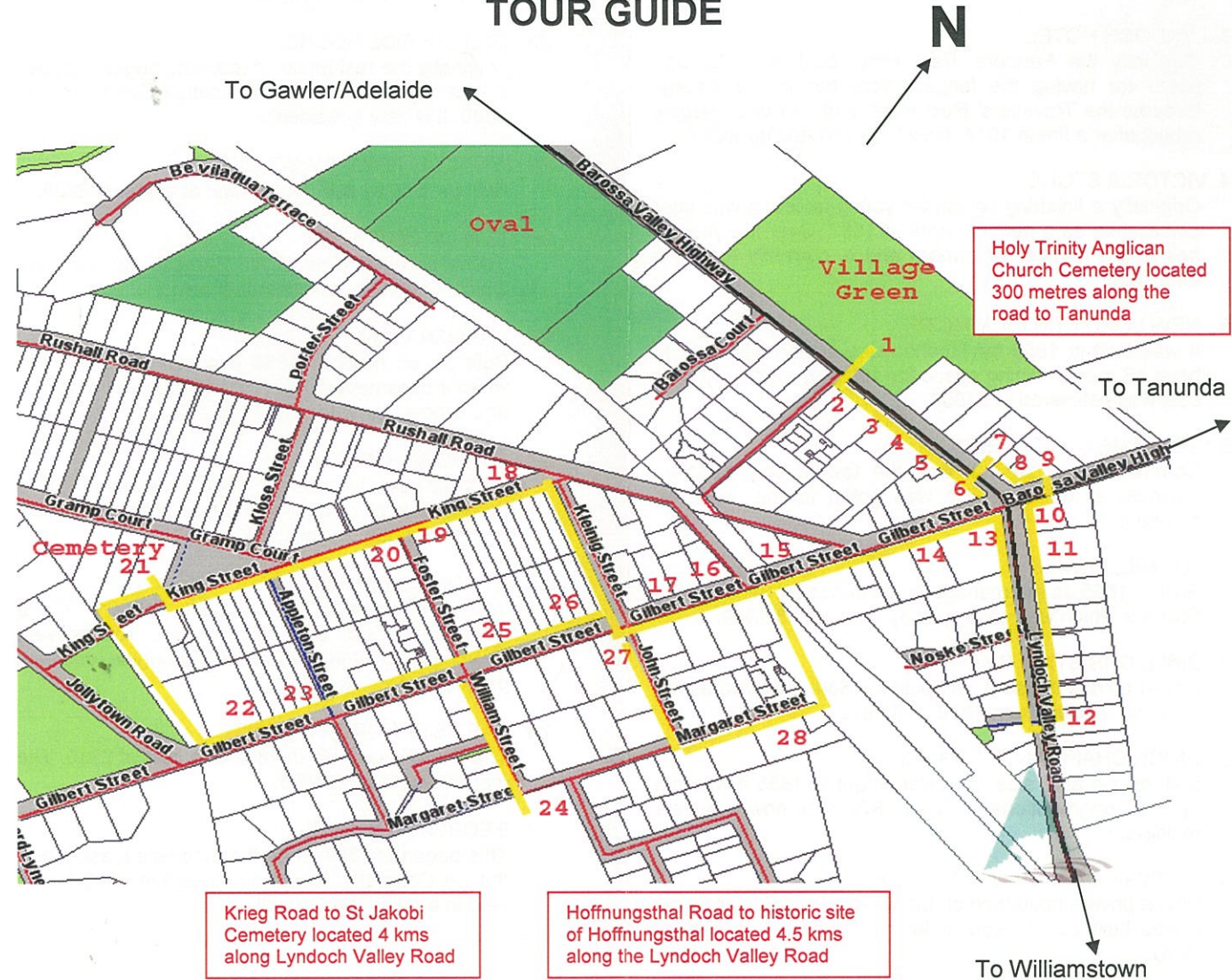
Starting as a general store, it became a cool drink shop in 1912. In 1923 a bank was built operating until closed in 1997. Remodelled in 2000, it opened as a wine sales outlet.

11. RANDALL'S SHOE SHOP

Originally a butcher shop in 1861, Frederick Randall converted it to a shoe shop in 1871. From the late 1950s it operated as various businesses and is currently a Pizza Bar.

LYNDOCH HISTORIC WALK

TOUR GUIDE



Illustrated booklets of the 'HERITAGE WALKS' with additional information and photographs available from the Lyndoch Library at a cost of \$5.00.