

Infrastructure Asset Management Plan 2020-2030 Information Sheet

Summary

The Infrastructure Asset Management Plan (IAMP) helps Council make the best possible decisions regarding the construction, operation, maintenance, renewal, replacement, expansion and disposal of infrastructure assets while minimising risk and cost to ratepayers and maximising service delivery. In alignment with Council's Community Plan, a draft Infrastructure Asset Management Plan has been developed.

This document integrates a number of individual (business specific) infrastructure asset plans, including:

- Transport
- Bridges
- Community Wastewater Management System
- Community and Recreation assets
- Stormwater
- Plant and Equipment
- Right of Use assets
- Nuriootpa Centennial Park Authority assets

The IAMP identifies the methodology and provides the answers for:

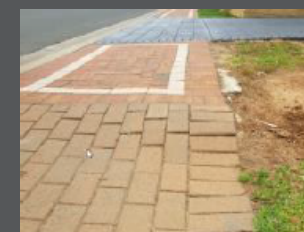
- What do we own?
- How much is it worth?
- What condition is it in?
- What work do we need to do to rehabilitate the asset?
- How much will it cost to rehabilitate the asset?

The assets included in this IAMP, are detailed in the table below. Replacement value of the assets as at 30 June 2019 is \$527,214,040.

ASSET CLASS	REPLACEMENT VALUE
Transport	\$ 214,428,434
Bridges	\$ 44,933,506
CWMS	\$ 54,143,773
Community and Recreation	\$ 145,716,009
Stormwater	\$ 47,908,997
Plant and Equipment	\$ 2,390,598
Nuriootpa Centennial Park Authority	\$ 17,692,723
Total	\$ 527,214,040

Using the Data - Transport Assets

The IAMP uses condition data to determine when rehabilitation and/or renewal works are required. Under this IAMP, Council intends to maintain its Transport assets at a Condition Rating of 3. For Transport Assets, the following are an example of what a Condition 3 rating looks like:



Key Opportunities

- Meet community needs and lower ongoing maintenance costs by timely and effective investing in the renewal of assets
- Shift toward more programmed maintenance activities to prevent asset failures and reduce reactive maintenance demand
- Engage early with internal partners to align renewal, enhancement and new project programs to enable more efficient use of funding and delivery options